

GREEN-DRI™

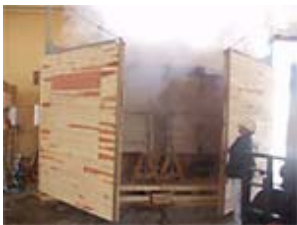
Biological Dry Kiln BDK-3000

Maximum Value, Minimum Loss, & Higher Quality

Biological Dry Kiln GREEN-DRI™ BDK-3000 is a revolutionary new dry kiln now available to the North American wood industry. This innovative, economical kiln was developed from a biotechnological concept based on the Bound Water Transfer Theory developed by Mr. Toshio Ito of Nippon Funen Mokuzai Co.Ltd. in Japan. Further to this concept, in 2003, Professor Agre at the Johns Hopkins University School of Medicine was awarded the Nobel Prize for his discovery of "channels" that regulate and facilitate water molecule transport through cell membranes, a natural osmotic process essential to all living organisms. GREEN-DRI utilizes these water channels in cell membranes to biologically remove the water from wood. Wood and its cells will continue to function as a living organism for a time even after being cut. GREEN-DRI utilizes this natural process to push the water out. Not only the so called, "Free Water" in cell lumen, but also the "Bound Water" in the cell wall matrix is removed through the channels. In this way GREEN-DRI can dry wood much faster and more economically than the traditional method. (Example: 2 3/4" x 2 3/4" cross-section White Oak boards can be dried in 2 weeks from an 80% moisture content down to a 20% moisture content) Traditional wood drying kilns force the water out from the wood with a high temperature and forced air, anywhere from 175 to 300 degrees F, rupturing the cells in the process. GREEN-DRI's operating temperature is relatively low at around 100 to 110 degree F. since thermal rupture is not desired or required to drive out the water. In GREEN-DRI, water is sweated out of the wood, as a natural cellular process. GREEN-DRI's double layer walls, ceiling, and floor are all made out of wood which makes it look and feel like the inside of a sauna because of the moisture and temperature. This wood construction is one of the key elements of this kiln technology. It uses wood to dry wood, all natural and Green.

BENEFITS

- MUCH FASTER THAN TRADITIONAL KILNS
- LOW TEMPERATURE (100deg. F)
- USES MUCH LESS ENERGY TO OPERATE
- PORTABLE / PANNELIZED CONSTRUCTION
- LESS WARPING / LESS CHECKS (CRACKS)
- NO DISCOLORATION (BEAUTIFUL)
- ECONOMICAL / NO UPFRONT INVESTMENT
- WOOD MAINTAINS ITS STRENGTH
- CUSTOM DIMENSIONS



In operation



Interior during operation



GREENSTONE INC. OF DELAWARE

A division of Greenstone Holdings, Inc.
11 Penn Plaza, 5th floor, New York, NY 10001-2003

For more information:

Call: 212-946-4734 Email: Info@egreenstone.com
Fax: 646-349-2205



WWW.EGREENSTONE.COM

GREEN-DRI BDK-3000-80115A