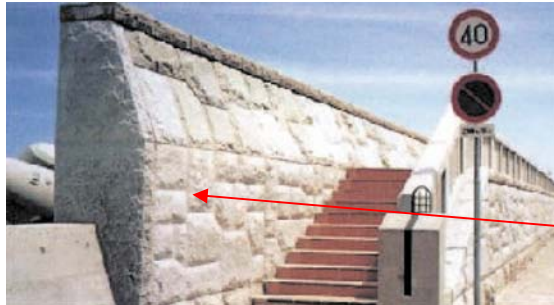


# APPLICATION EXAMPLES

## MAGNELINE TYPE - I

### ① As Adhesive for Concrete



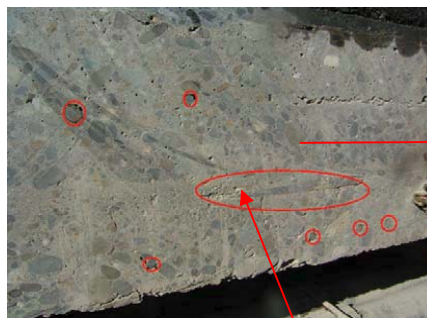
Gluing Granite

### ② As Rust Protection Lining

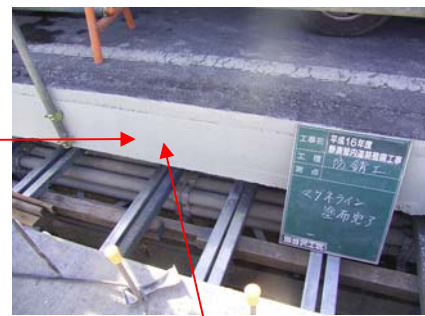


Rust Protection with color

### ③ Steel Rust Protection & Repair



Steel Pieces marked by ○



Surface Repair & Rust Protection

### ④ As Corrosion Lining



Lining

# MAGNELINE TYPE - II

## ① Structural Reinforcement of Concrete Support Structure



Wrap-around reinforcement of Reinforced Concrete Bridge Support



Lower Surface Reinforcement of Reinforced Concrete Floor

## ② Earthquake Protection



Underground Parking Structure Support